

Ball Jet Diffuser - BJD - ETL - Intertek Tested
B-20 Series
Model: BJD-AB-20B
Type: Ball Jet Diffuser
Construction: Aluminium (AL)

BETEC CAD. manufactures Eyeball type Ball Jet Diffuser, which are designed for delivering accurate and powerful stream of air over long distances. Jet nozzles are mainly used in HVAC systems for spot cooling applications, where air has to travel a large distance to the occupied zone and where the distribution of air via ceiling diffusers is not possible. The Ball Jet Diffuser are placed in the corners, high level areas and can be mounted in any angle, as its air pattern can be altered to any angle.

Eyeball type Ball Jet Diffuser angular movement allows the airstream to be delivered throughout a wide area either in full jet position or in reduced jet position with trajectory control and make them suitable for vertical, inclined and horizontal air discharge applications, where spot heating or cooling is required such as entrances and concentrated areas of machinery which have high heat loads and are hence used normally in large rooms like Malls, Airports, Auditoriums, Sports Arena, Hyper markets, Zoo etc.

Standard Construction

High Quality Aluminium Construction

Finish

Mill finish

Optional Construction
Mounting plate

1.2 mm thick aluminium sheet.

Foam Gasket

Provided all around the frame, to prevent leakage of air.

Plenum chamber

Plenum is available with circular, square or rectangular spigots in either top or side entry applications.

Plenum Casing

0.7 mm thick galvanized steel sheet.

Insulation

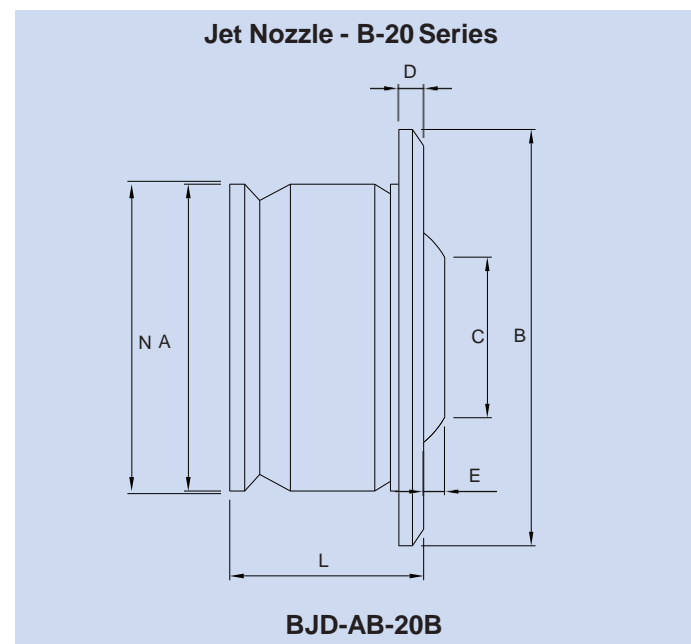
 Acoustic liner of 13 mm thickness, 32 kg/m³ density.

Finish

Available with RAL powder coating, please specify color.



BJD-AB-20B

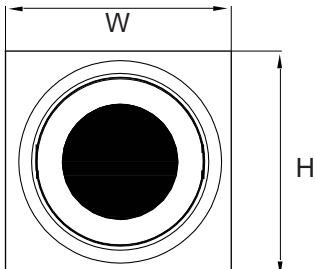
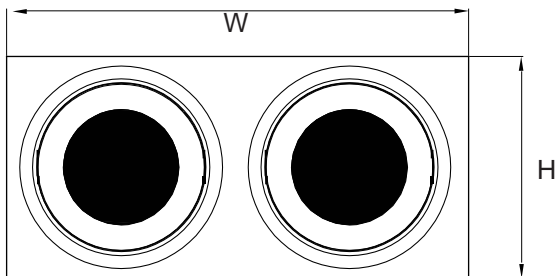
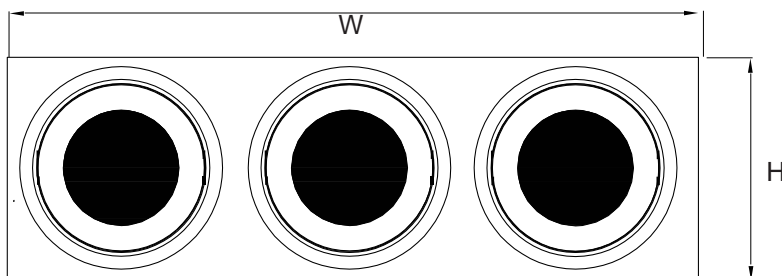
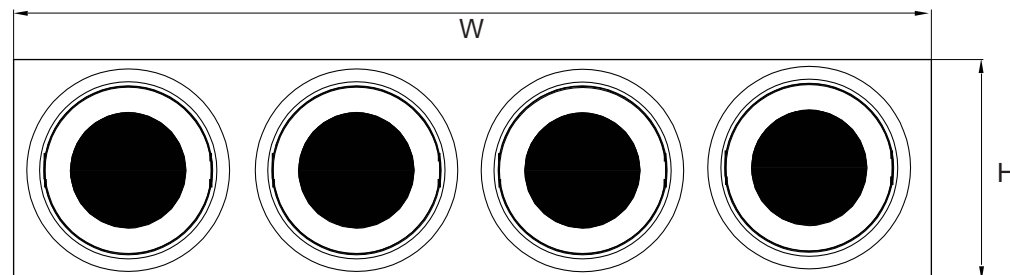


BJD-AB-20B

Sizes and Dimensions

Neck Size	A	B	C	D	E	L
150 Ø	146	195	80	22	10	100
200 Ø	198	260	108	20	12	132
250 Ø	248	310	128	28	15	170
300 Ø	313	380	165	30	29	205
350 Ø	348	430	190	29	33	220
400 Ø	398	483	210	38	33	250

Selected Products of the company have been Classified / Listed / Tested by various international testing authorities.

Ball Jet Diffuser - BJD - ETL - Intertek Tested
Construction Details and Daimensions
B-20 Series
Model: BJD-AB-20B
Type: Ball Jet Diffuser
Construction: Aluminium (AL)

Model: BJD-AB-20B-1P

Model: BJD-AB-20B-2P

Model: BJD-AB-20B-3P

Model: BJD-AB-20B-4P

Model BJD-AB-20B-1P	Face Plate	
	Width (mm)	Height (mm)
150 mm Neck Dia	225	225
200 mm Neck Dia	290	290
250 mm Neck Dia	340	340
315 mm Neck Dia	410	410
350 mm Neck Dia	460	460
400 mm Neck Dia	515	515

Model BJD-AB-20B-2P	Face Plate	
	Width (mm)	Height (mm)
150 mm Neck Dia	450	225
200 mm Neck Dia	580	290
250 mm Neck Dia	680	340
315 mm Neck Dia	820	410
350 mm Neck Dia	920	460
400 mm Neck Dia	1030	515

Model BJD-AB-20B-3P	Face Plate	
	Width (mm)	Height (mm)
150 mm Neck Dia	675	225
200 mm Neck Dia	870	290
250 mm Neck Dia	1020	340
315 mm Neck Dia	1230	410
350 mm Neck Dia	1380	460
400 mm Neck Dia	1545	515

Model BJD-AB-20B-4P	Face Plate	
	Width (mm)	Height (mm)
150 mm Neck Dia	900	225
200 mm Neck Dia	1160	290
250 mm Neck Dia	1360	340
315 mm Neck Dia	1640	410
350 mm Neck Dia	1840	460
400 mm Neck Dia	2060	515

Selected Products of the company have been Classified / Listed / Tested by various international testing authorities.



Ball Jet Diffuser - BJD - ETL - Intertek Tested
B-20 Series
Engineering and Performance Data
Model: BJD-AB-20B
Type: Ball Jet Diffuser
Construction: Aluminium (AL)

Size In Inches	Neck FPM		800	1200	1600	2000	2400	2800	3200	3600	4000	4400
6	Ak 0.077	CFM	62	92	123	154	185	216	246	277	308	339
		Sp in.wg	0.052	0.117	0.209	0.326	0.470	0.639	0.835	1.057	1.305	1.579
		NC	<15	<15	21	26	31	35	38	41	44	46
		Throw	25,16,12	34,21,16	40,24,18	45,27,21	48,29,22	52,31,24	54,33,25	57,34,26	59,36,27	61,37,28
8	Ak 0.122	CFM	98	146	195	244	293	342	390	439	488	537
		Sp in.wg	0.021	0.046	0.082	0.129	0.185	0.252	0.329	0.416	0.514	0.622
		NC	<15	<15	<15	<15	<15	20	25	29	32	36
		Throw	35,19,11	44,26,14	51,30,17	56,34,19	60,37,21	63,39,22	66,42,24	69,43,25	71,45,26	73,47,27
10	Ak 0.175	CFM	140	210	280	350	420	490	560	630	700	770
		Sp in.wg	0.009	0.021	0.037	0.058	0.084	0.114	0.149	0.189	0.233	0.282
		NC	<15	<15	<15	<15	<15	<15	18	23	27	31
		Throw	41,21,11	51,28,14	58,33,17	64,37,18	68,40,21	71,42,21	75,45,23	78,47,24	80,48,25	82,51,26
12	Ak 0.236	CFM	189	283	378	472	566	661	755	850	944	1038
		Sp in.wg	0.018	0.042	0.074	0.116	0.166	0.227	0.296	0.375	0.462	0.560
		NC	<15	<15	<15	<15	<15	<15	19	24	28	32
		Throw	44,22,12	55,28,15	62,33,17	68,36,19	72,39,21	76,41,22	80,43,23	83,45,24	85,46,25	88,48,26
14	Ak 0.301	CFM	241	361	481	601	721	841	961	1081	1201	1321
		Sp in.wg	0.027	0.062	0.075	0.1	0.124	0.152	0.174	0.2	0.223	0.247
		NC	<15	<15	<15	<15	20	25	27	31	34	37
		Throw	46,24,12	56,30,16	64,35,18	70,38,21	74,40,22	77,43,24	81,46,25	83,47,26	86,48,27	90,50,28
16	Ak 0.375	CFM	300	450	600	750	900	1050	1200	1350	1500	1650
		Sp in.wg	0.098	0.221	0.392	0.613	0.882	1.201	1.569	1.985	2.451	2.966
		NC	<15	<15	17	25	31	37	41	46	49	>50
		Throw	38,21,17	54,19,23	58,24,20	67,22,24	68,22,24	77,24,27	81,21,23	84,26,24	86,24,25	91,24,26

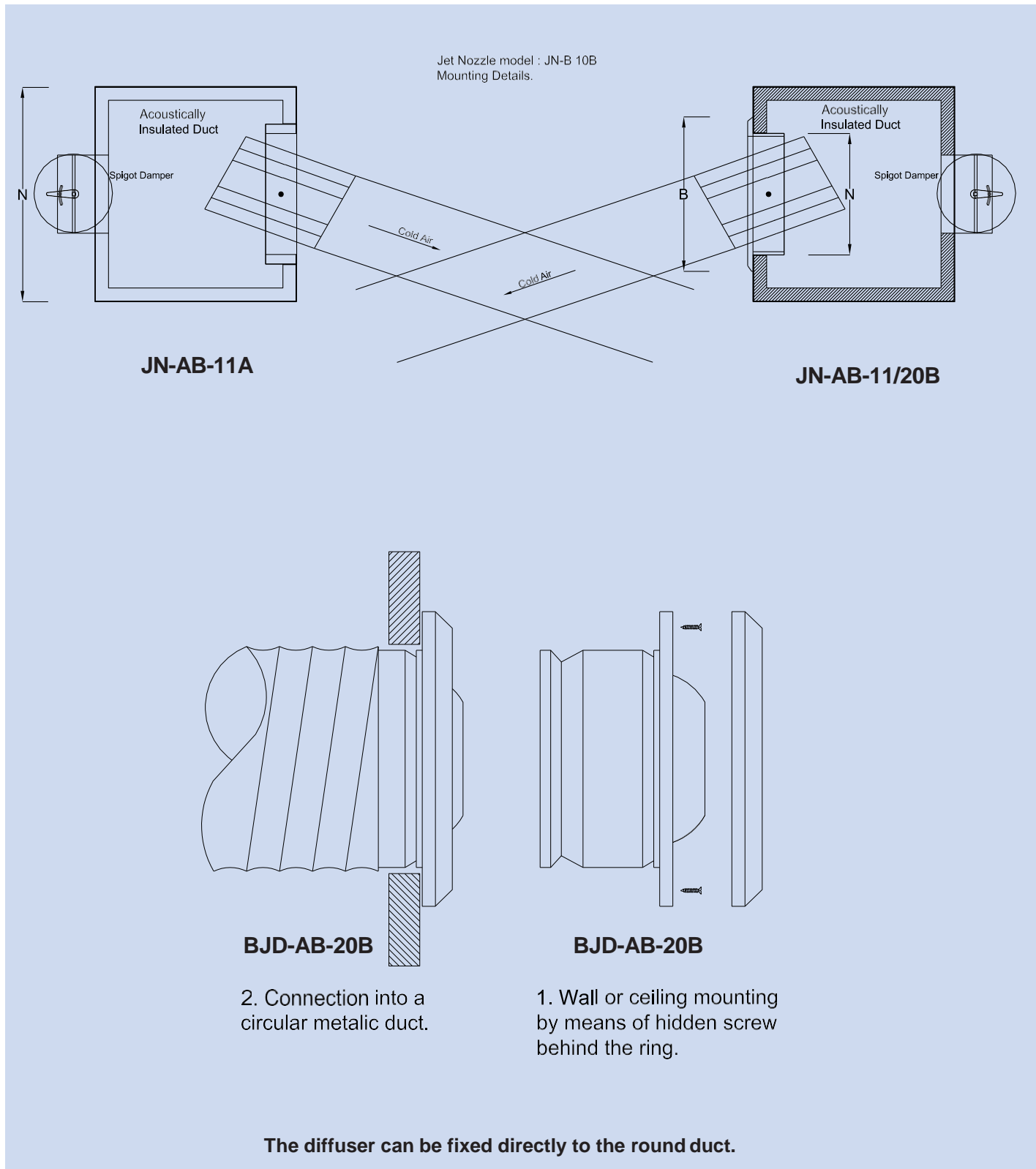
Note:

1. Airflow is measured in Cubic foot/ minute (CFM).
2. Static Pressure (Ps) is measured in inch water guage (in.w.g).
3. Noise Criteria (NC) is measured in decibals (dB).
4. Neck velocity is measured in feet/ minute (fpm).

Selected Products of the company have been Classified / Listed / Tested by various international testing authorities.

Valves & Nozzels

Installation Details



Selected Products of the company have been Classified / Listed / Tested by various international testing authorities.